

leg; distal tibia; resection-replantation

♂ 9 yo

1st referral: Jan 2012

HPI:

Pain in right ankle since December 2011

PMH:

Non contributory

leg; distal tibia; resection-replantation

clinical findings:

- **No palpable mass**
- **Local pain distal tibia**
- **Normal skin**
- **Normal neurological findings**

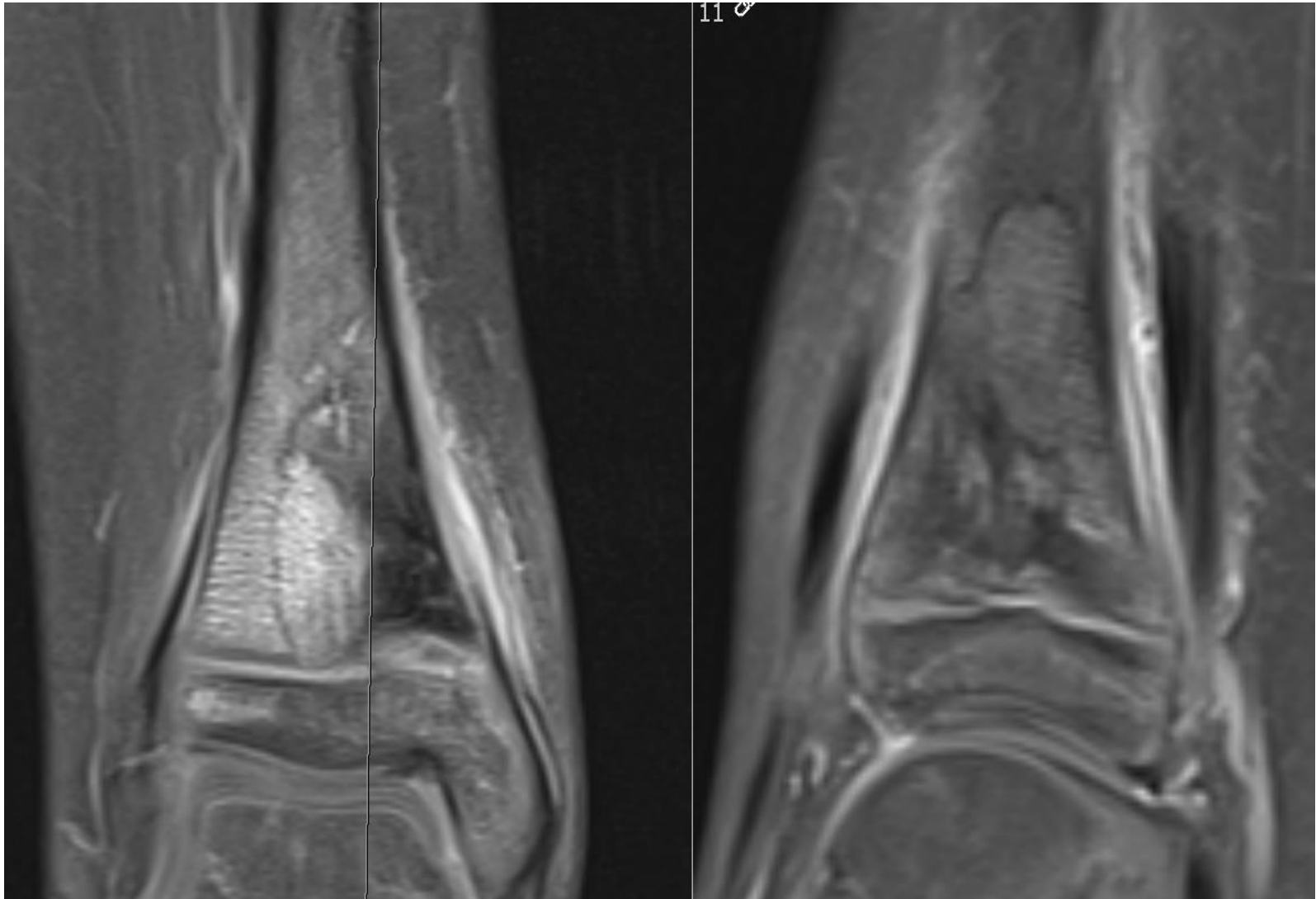
leg; distal tibia; resection-replantation

Xray: January 3rd, 2012



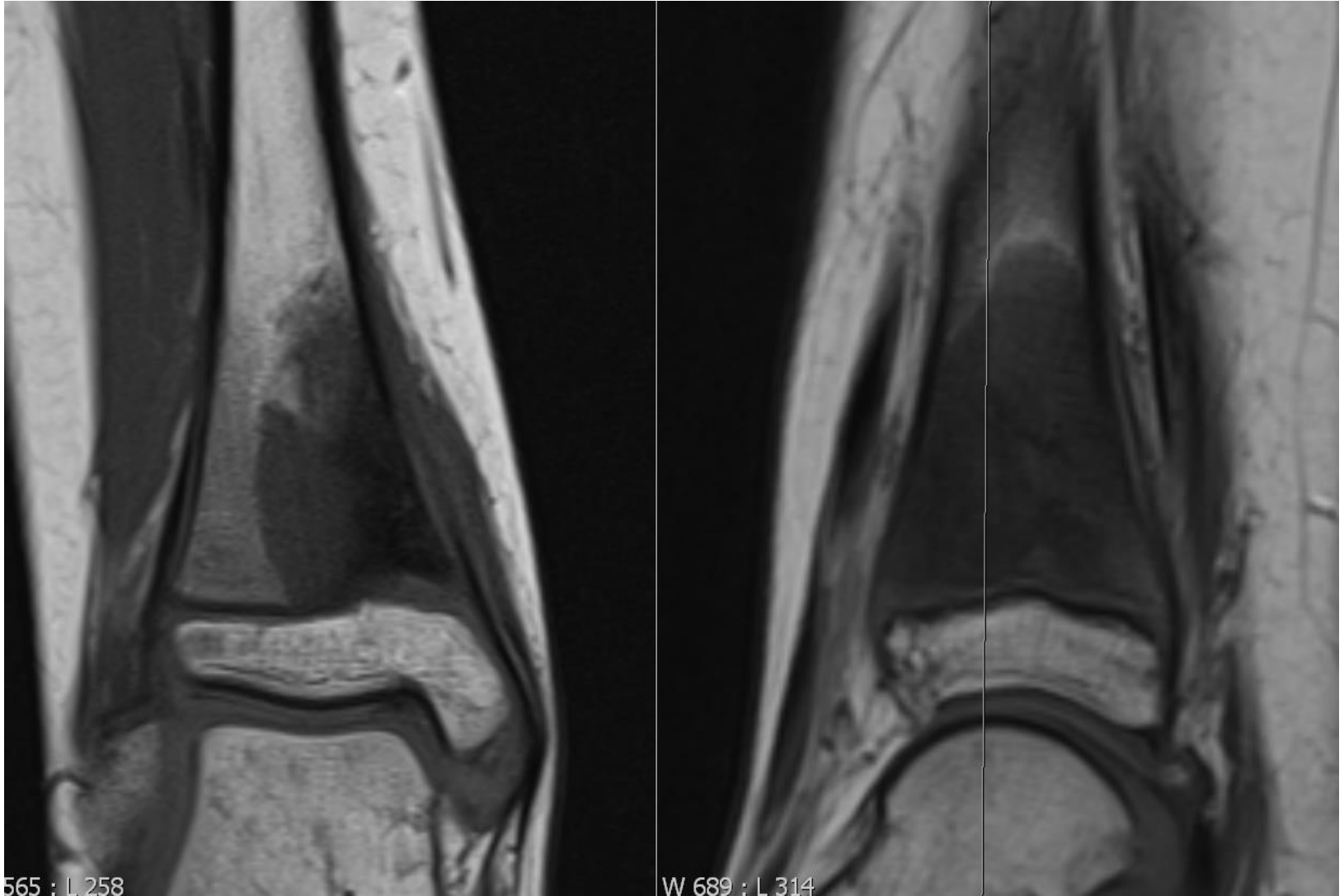
leg; distal tibia; resection-replantation

MRI: January 4th, 2012



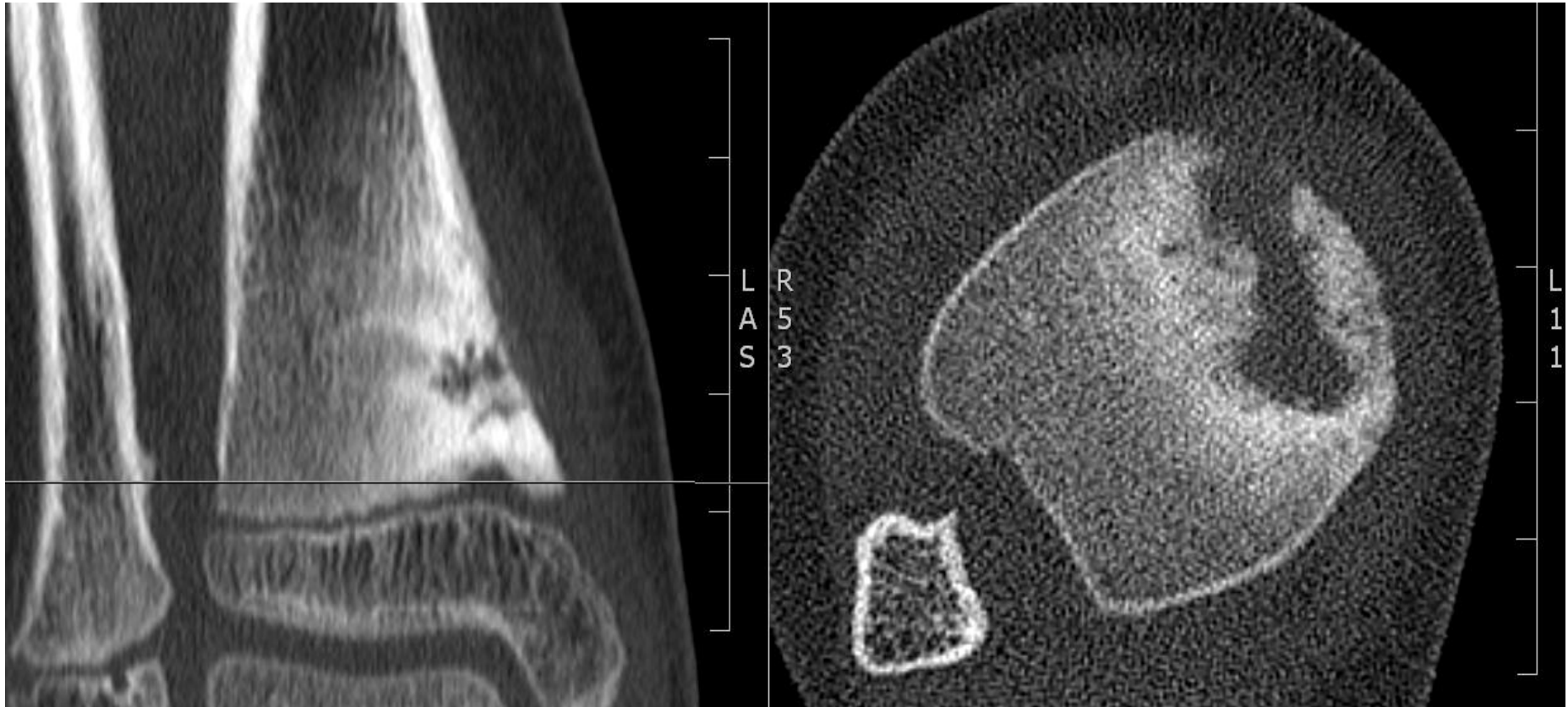
leg; distal tibia; resection-replantation

MRI: January 4th, 2012



leg; distal tibia; resection-replantation

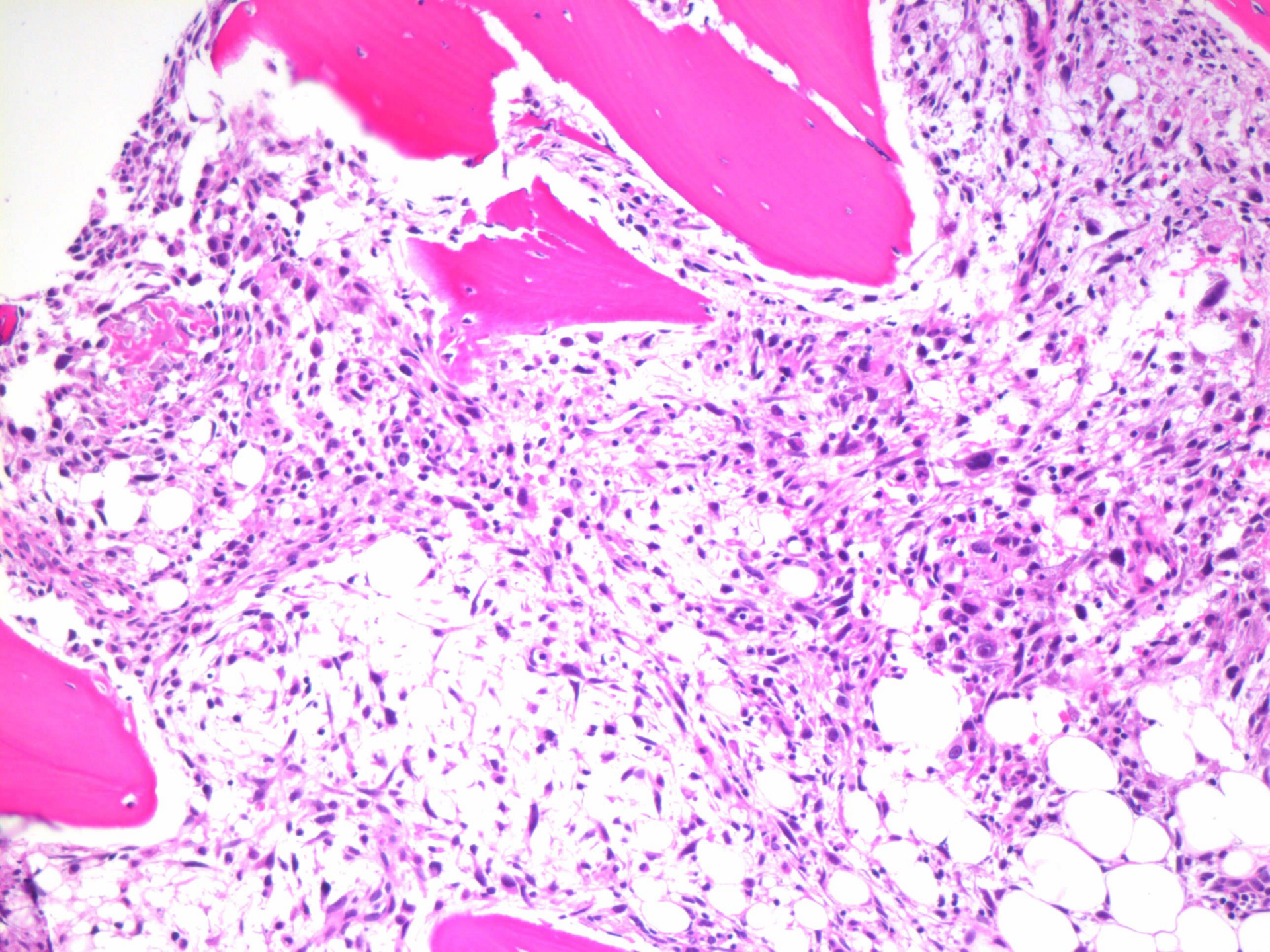
CT: January 4th, 2012

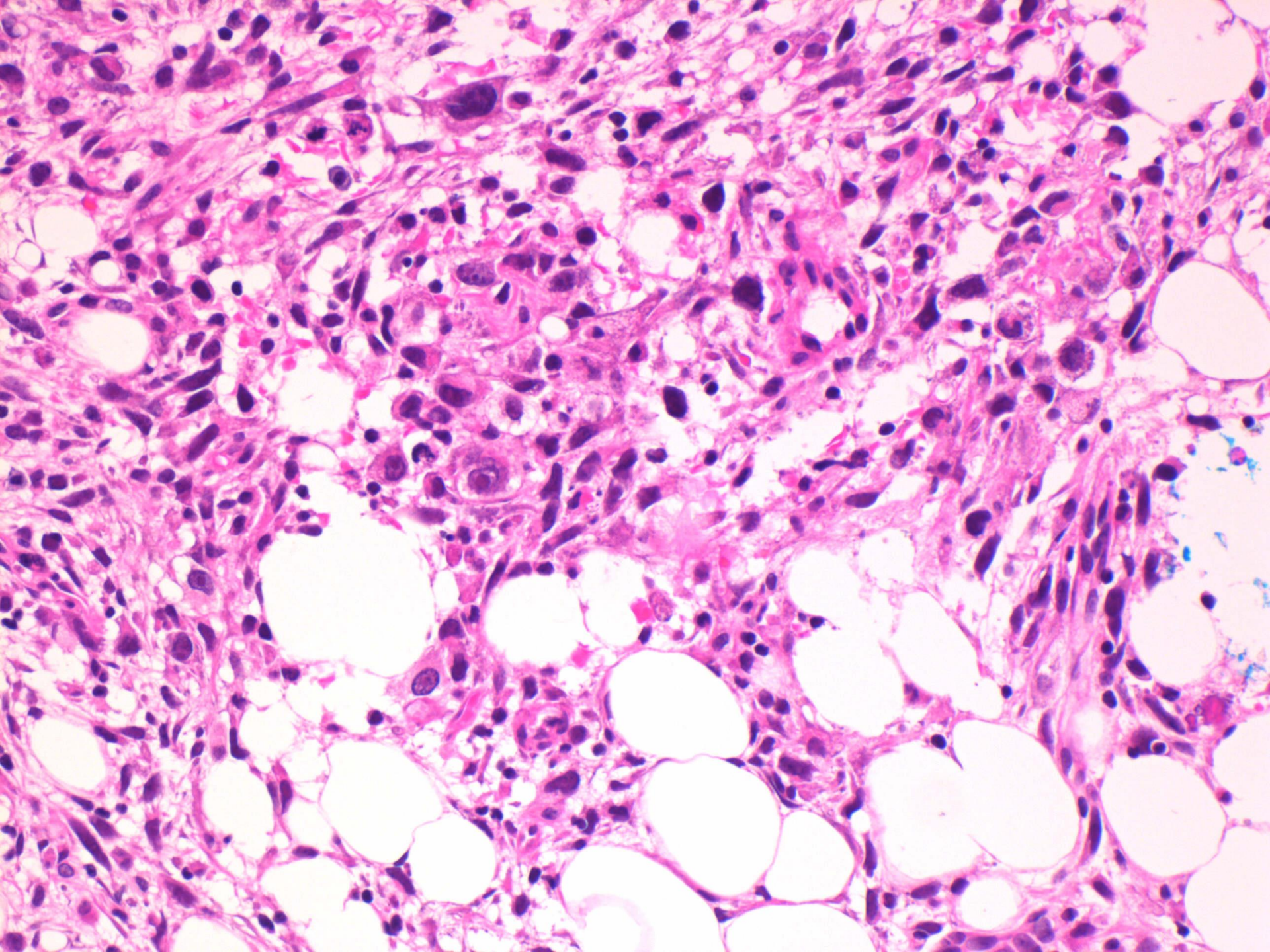


leg; distal tibia; resection-replantation

Biopsy: January 6th, 2012







leg; distal tibia; resection-replantation Biopsy: January 6th, 2012

Diagnose

Osteosarkom, high grade (rechts tibial distal; siehe Mikroskopie)

leg; distal tibia; resection-replantation

Chemotherapy:

EURAMOS

starting January 20th, 2012

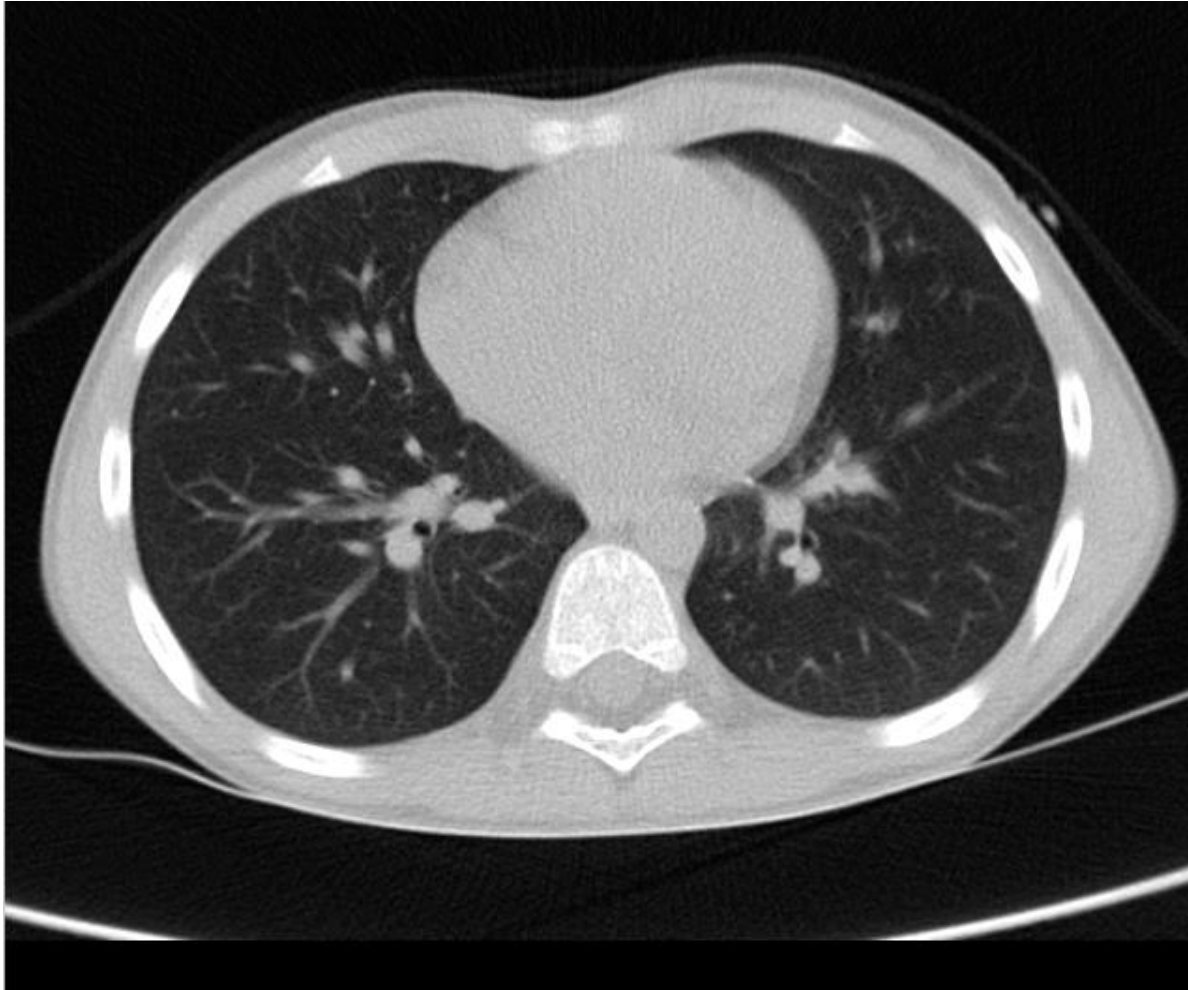
leg; distal tibia; resection-replantation

MRI: March 8th, 2012



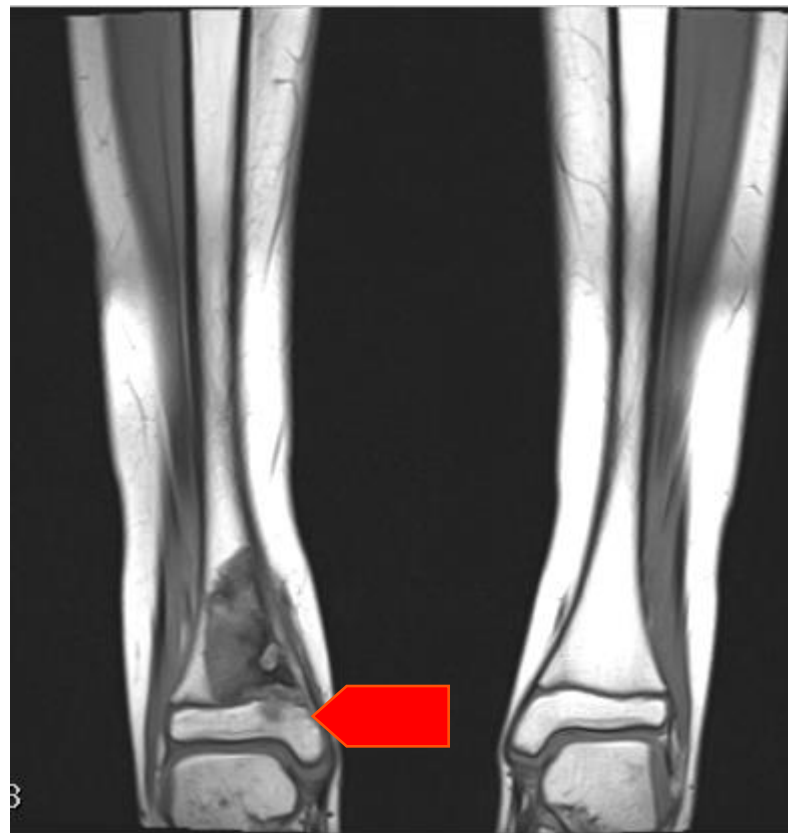
leg; distal tibia; resection-replantation

CT: March 16th, 2012



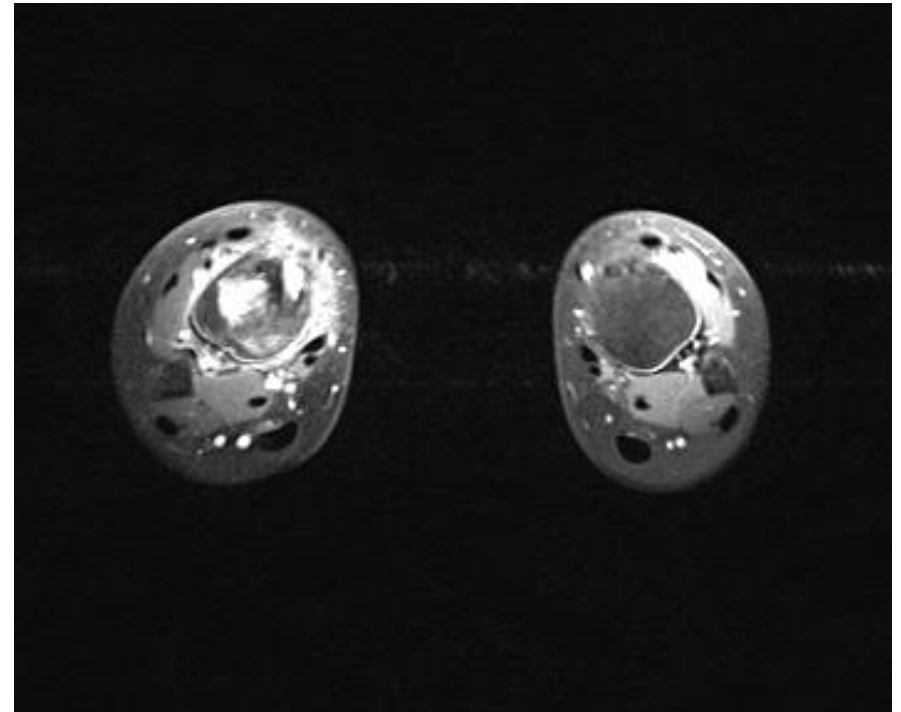
leg; distal tibia; resection-replantation

MRI: April 2nd, 2012



leg; distal tibia; resection-replantation

MRI: April 2nd, 2012



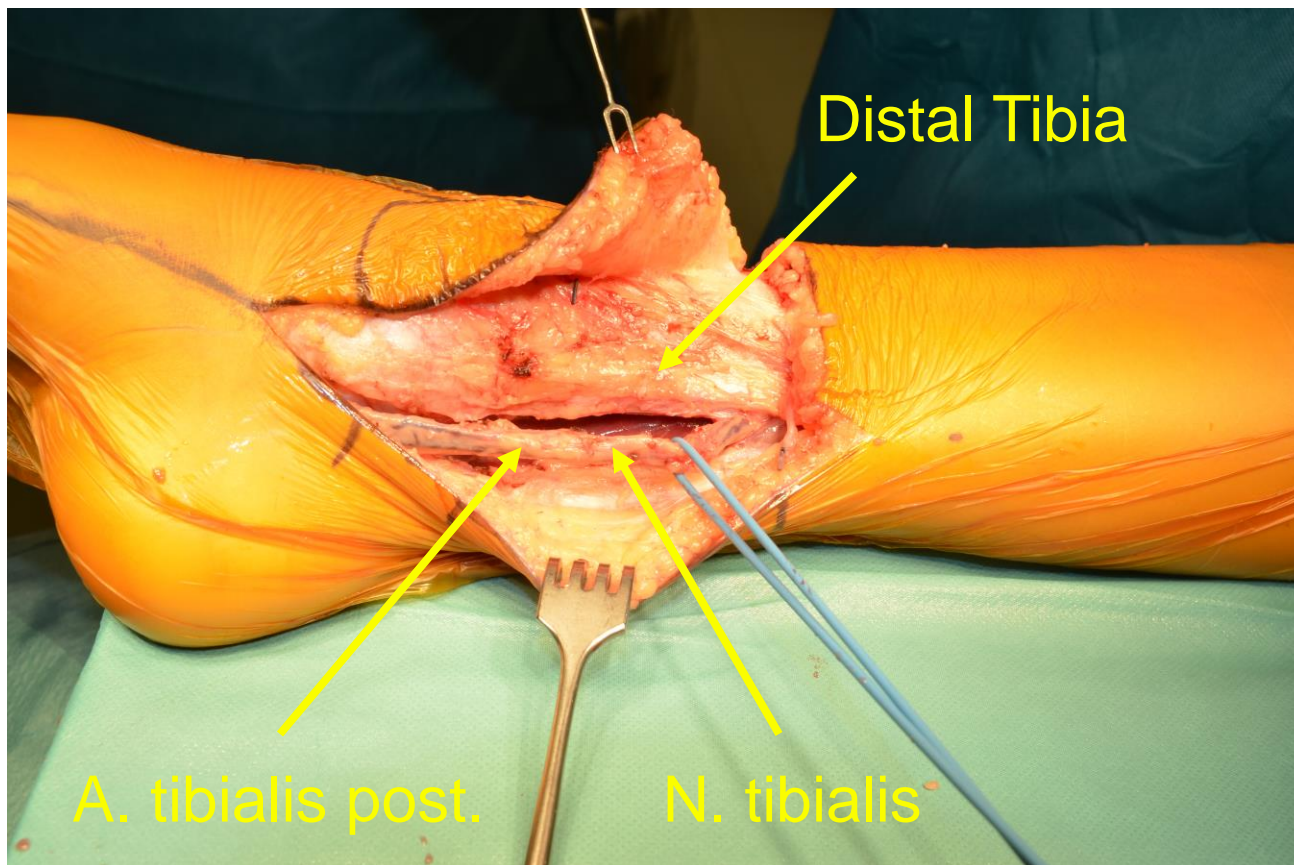
leg; distal tibia; resection-replantation

Surgery: April 10th, 2012



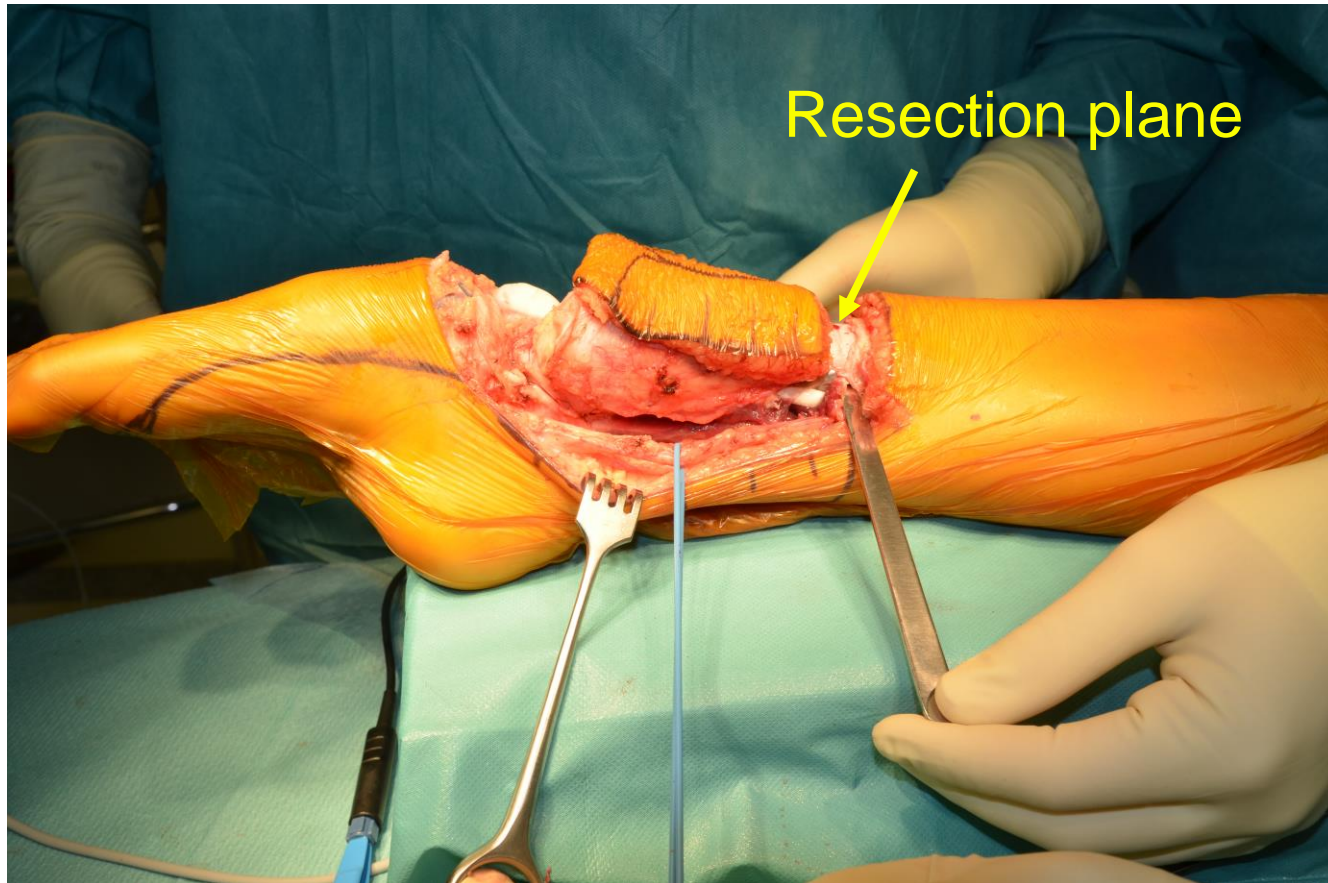
leg; distal tibia; resection-replantation

Surgery: April 10th, 2012



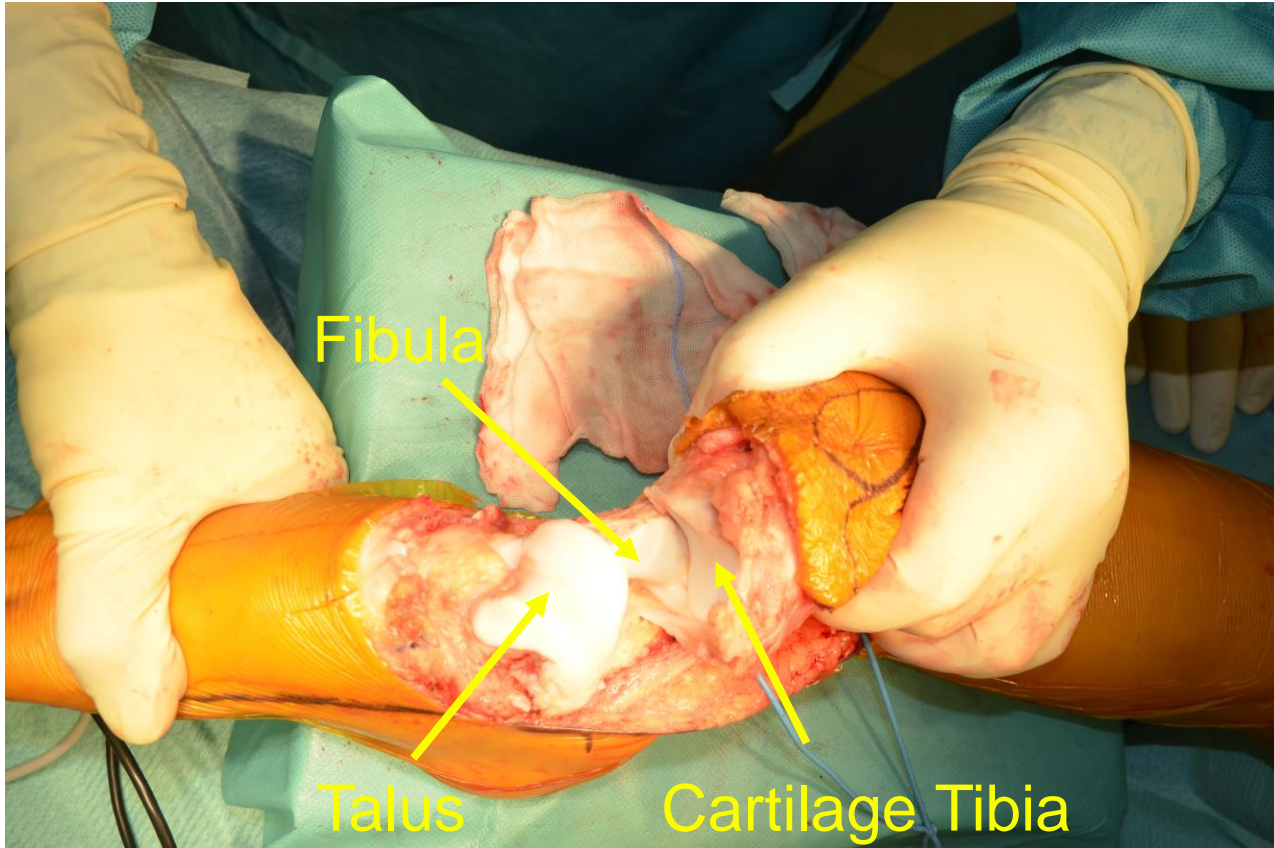
leg; distal tibia; resection-replantation

Surgery: April 10th, 2012



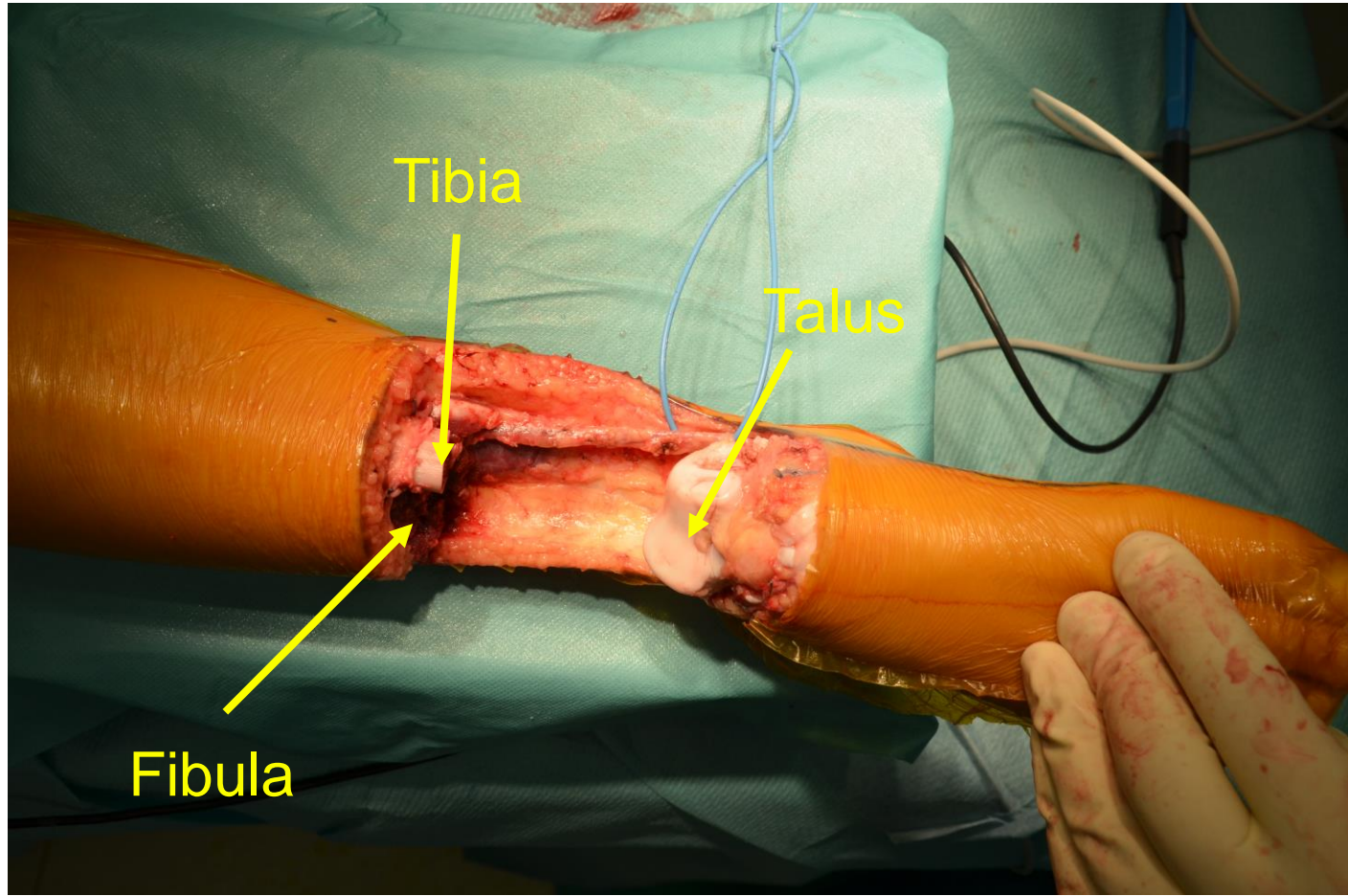
leg; distal tibia; resection-replantation

Surgery: April 10th, 2012



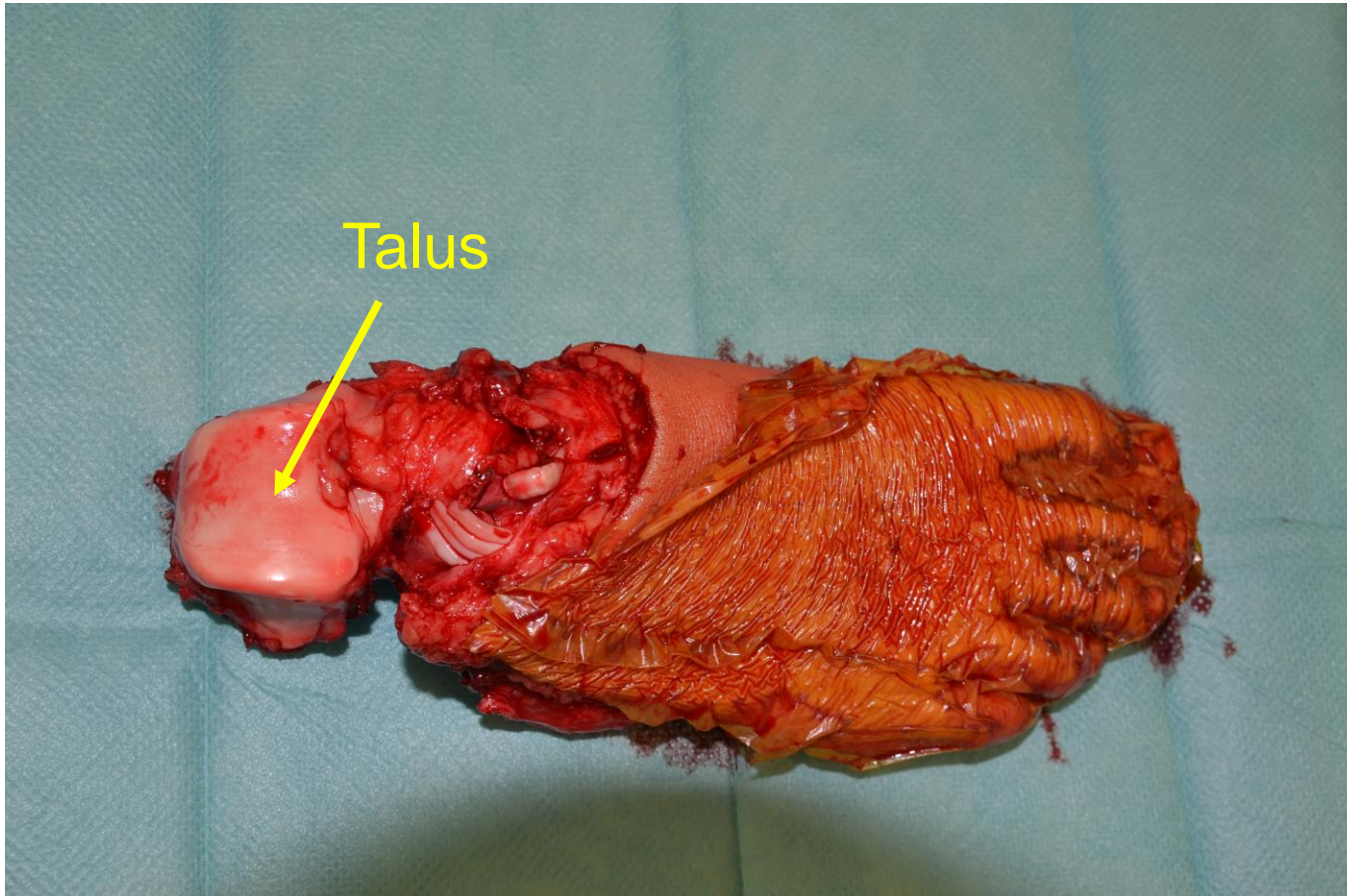
leg; distal tibia; resection-replantation

Surgery: April 10th, 2012



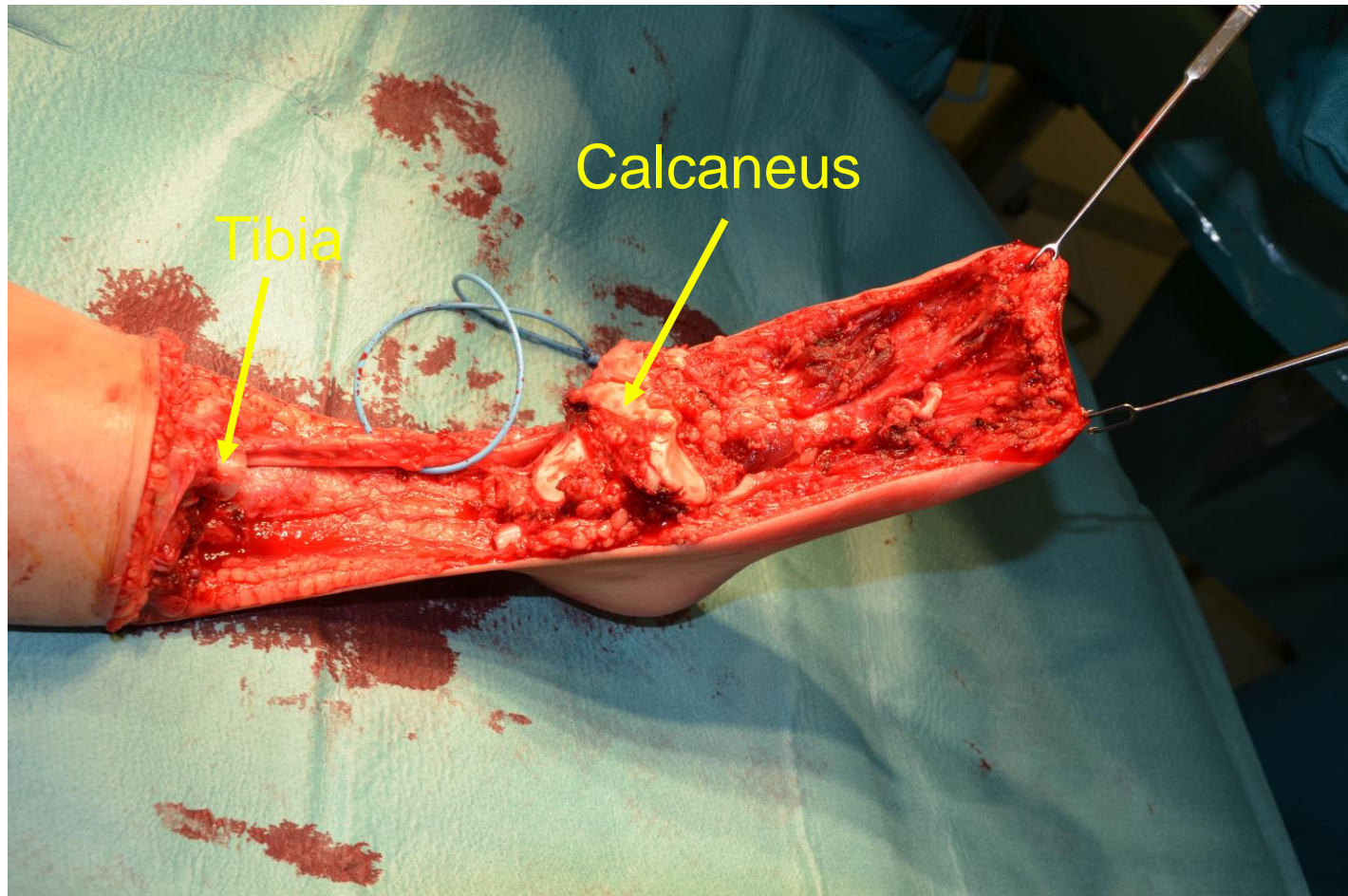
leg; distal tibia; resection-replantation

Surgery: April 10th, 2012

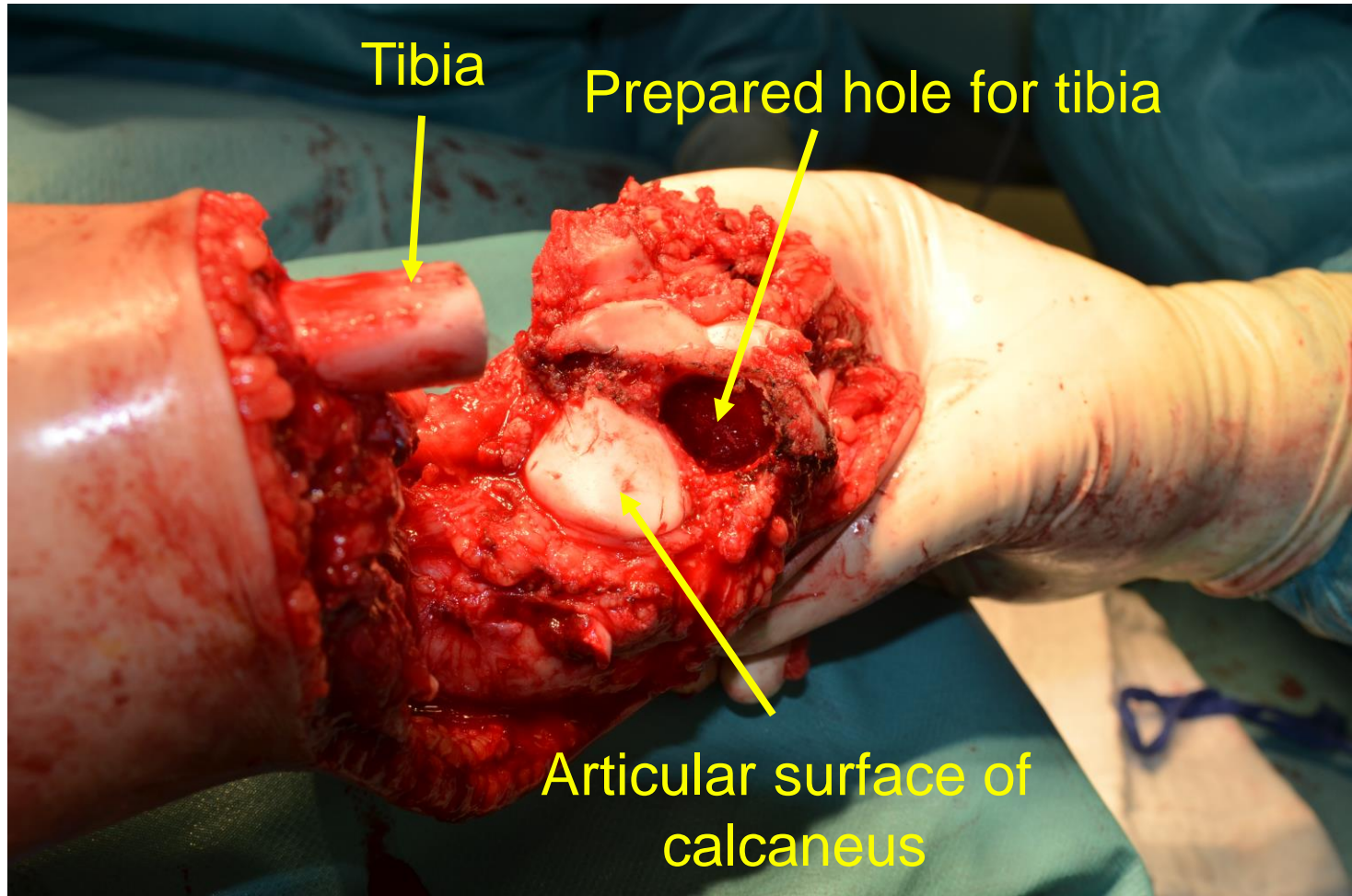


leg; distal tibia; resection-replantation

Surgery: April 10th, 2012



leg; distal tibia; resection-replantation Surgery: April 10th, 2012



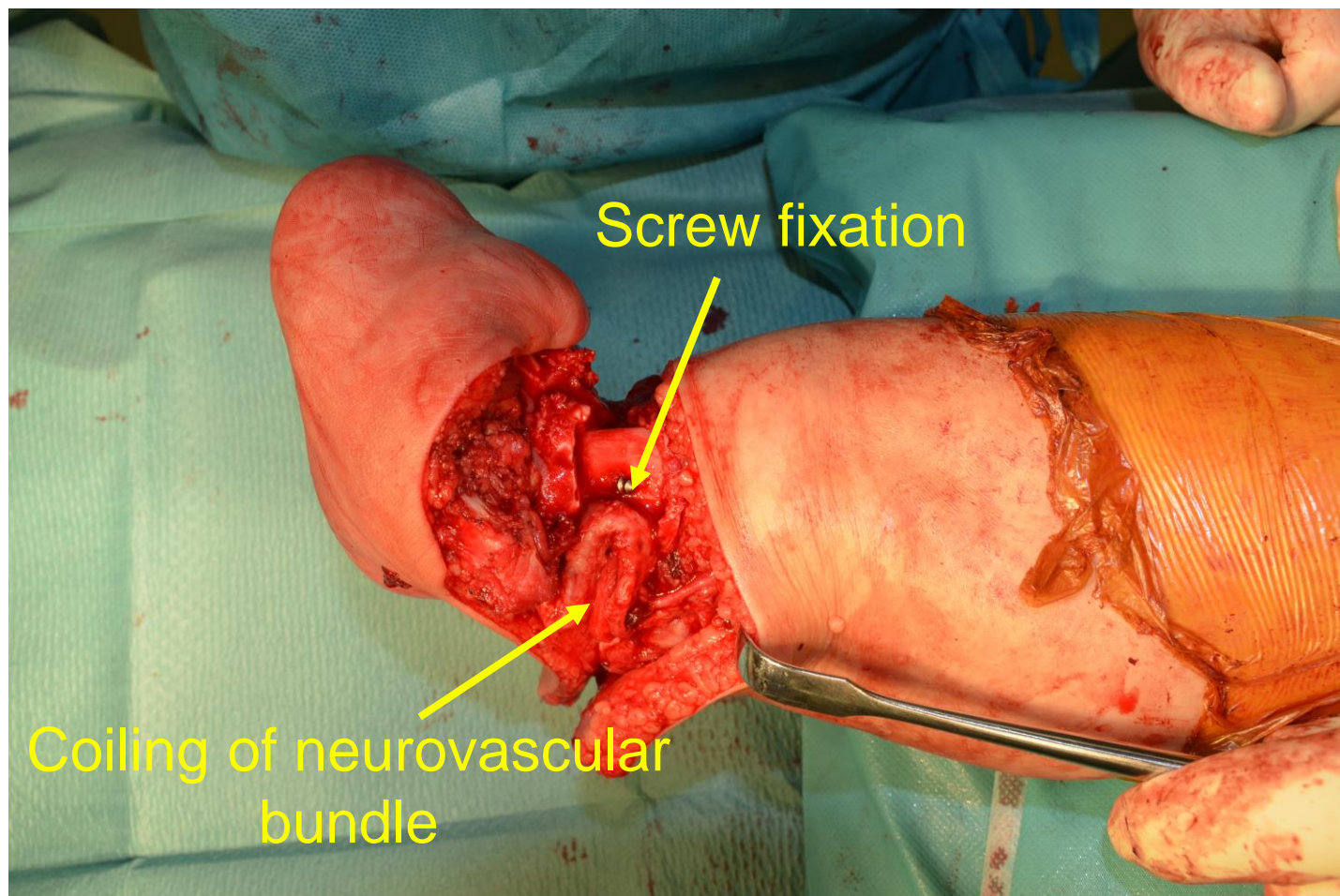
leg; distal tibia; resection-replantation

Surgery: April 10th, 2012



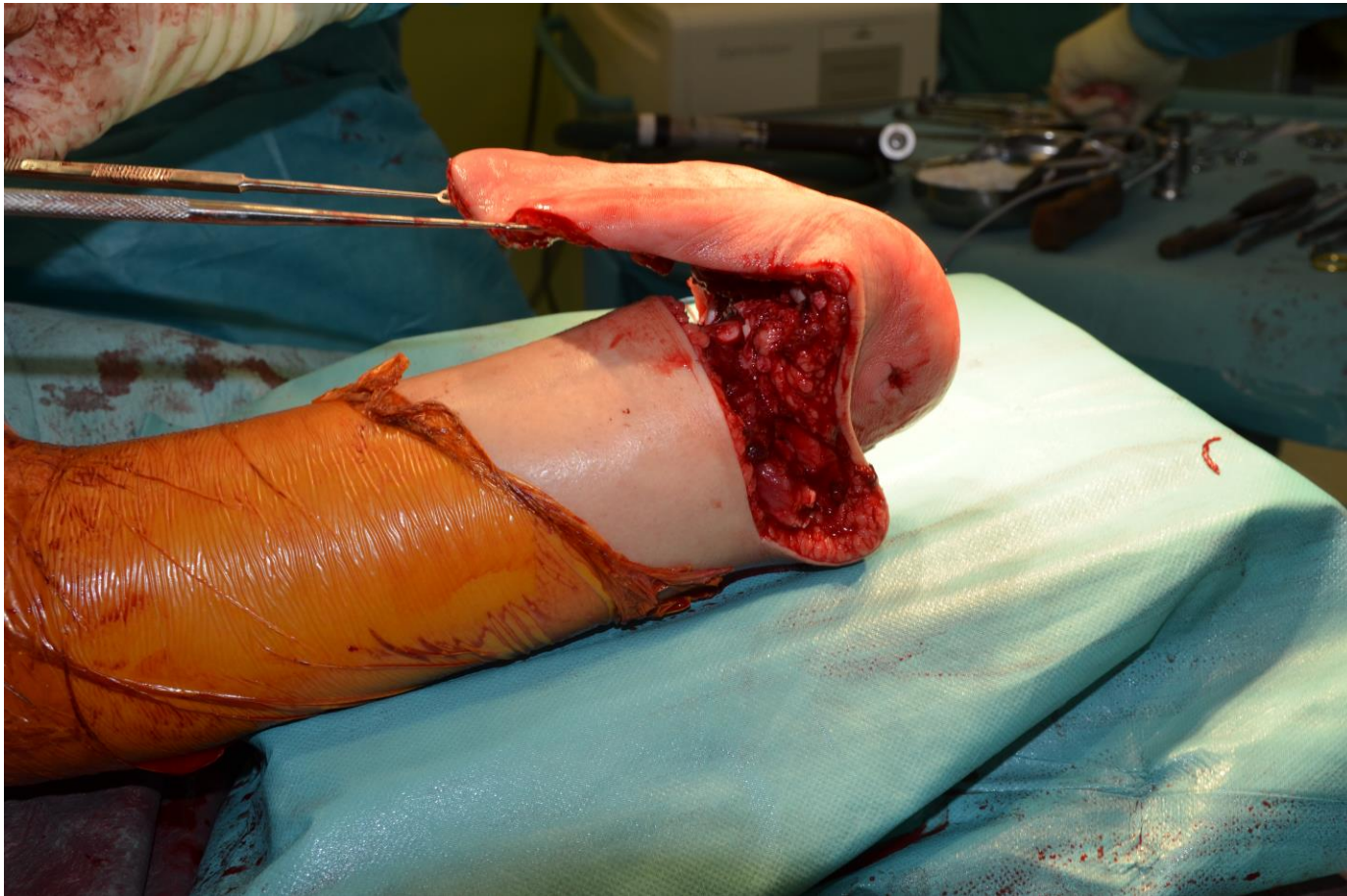
leg; distal tibia; resection-replantation

Surgery: April 10th, 2012



leg; distal tibia; resection-replantation

Surgery: April 10th, 2012



leg; distal tibia; resection-replantation

Surgery: April 10th, 2012



leg; distal tibia; resection-replantation

Xray: April 10th, 2012



leg; distal tibia; resection-replantation

Surgery: April 10th, 2012



leg; distal tibia; resection-replantation

Surgery: April 10th, 2012

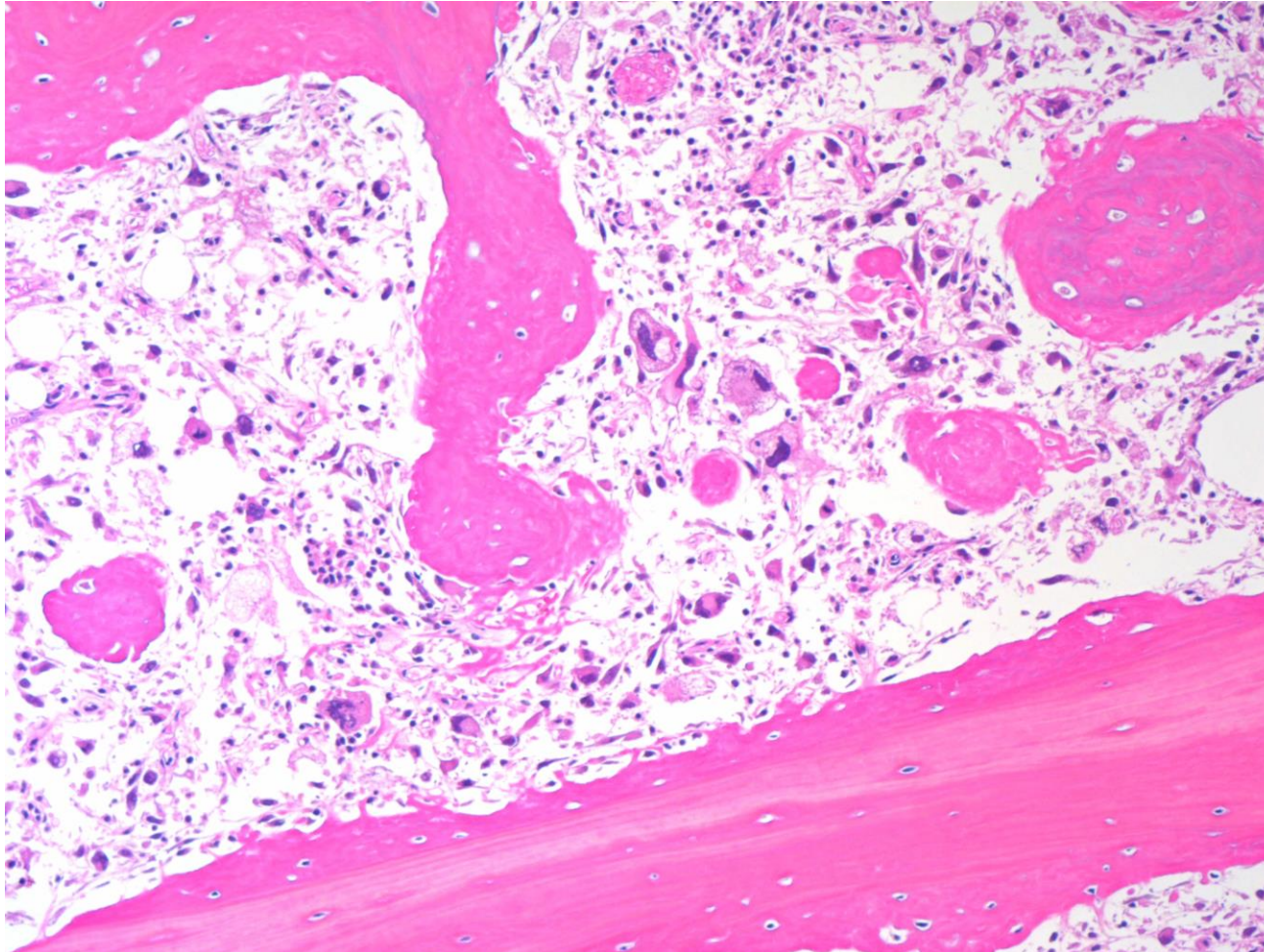


leg; distal tibia; resection-replantation Surgery: April 10th, 2012



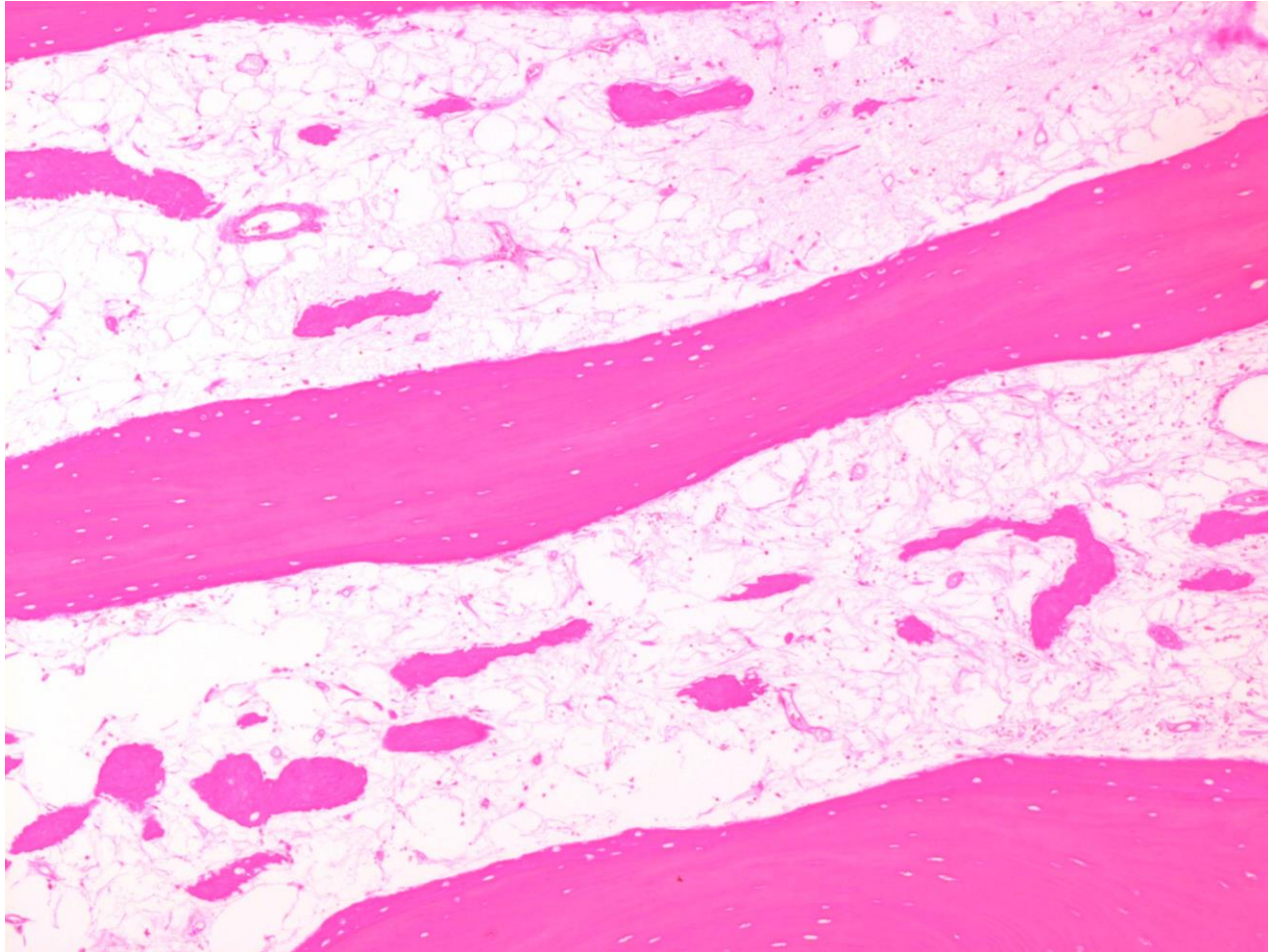
leg; distal tibia; resection-replantation

Surgery: April 10th, 2012



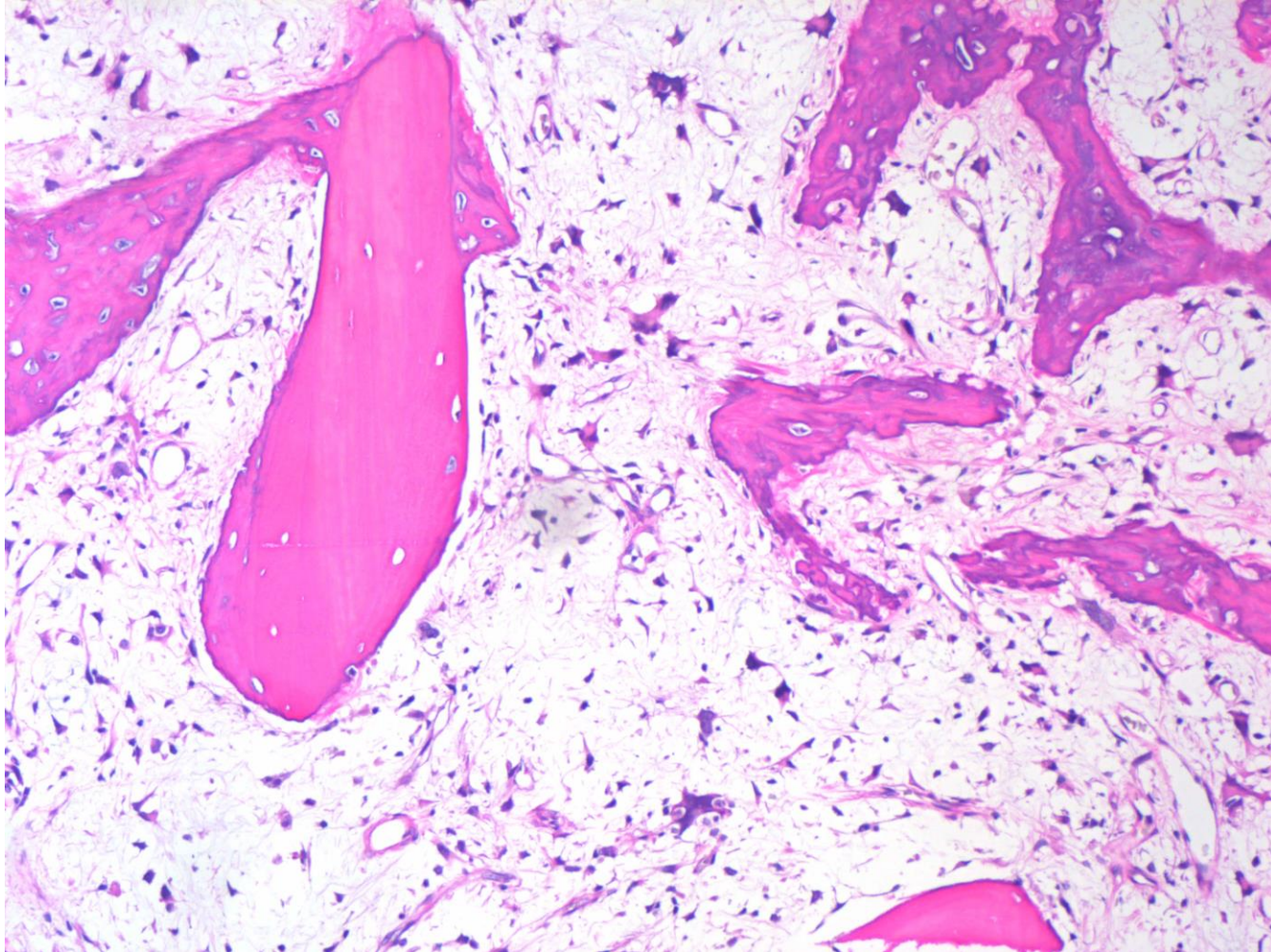
leg; distal tibia; resection-replantation

Surgery: April 10th, 2012



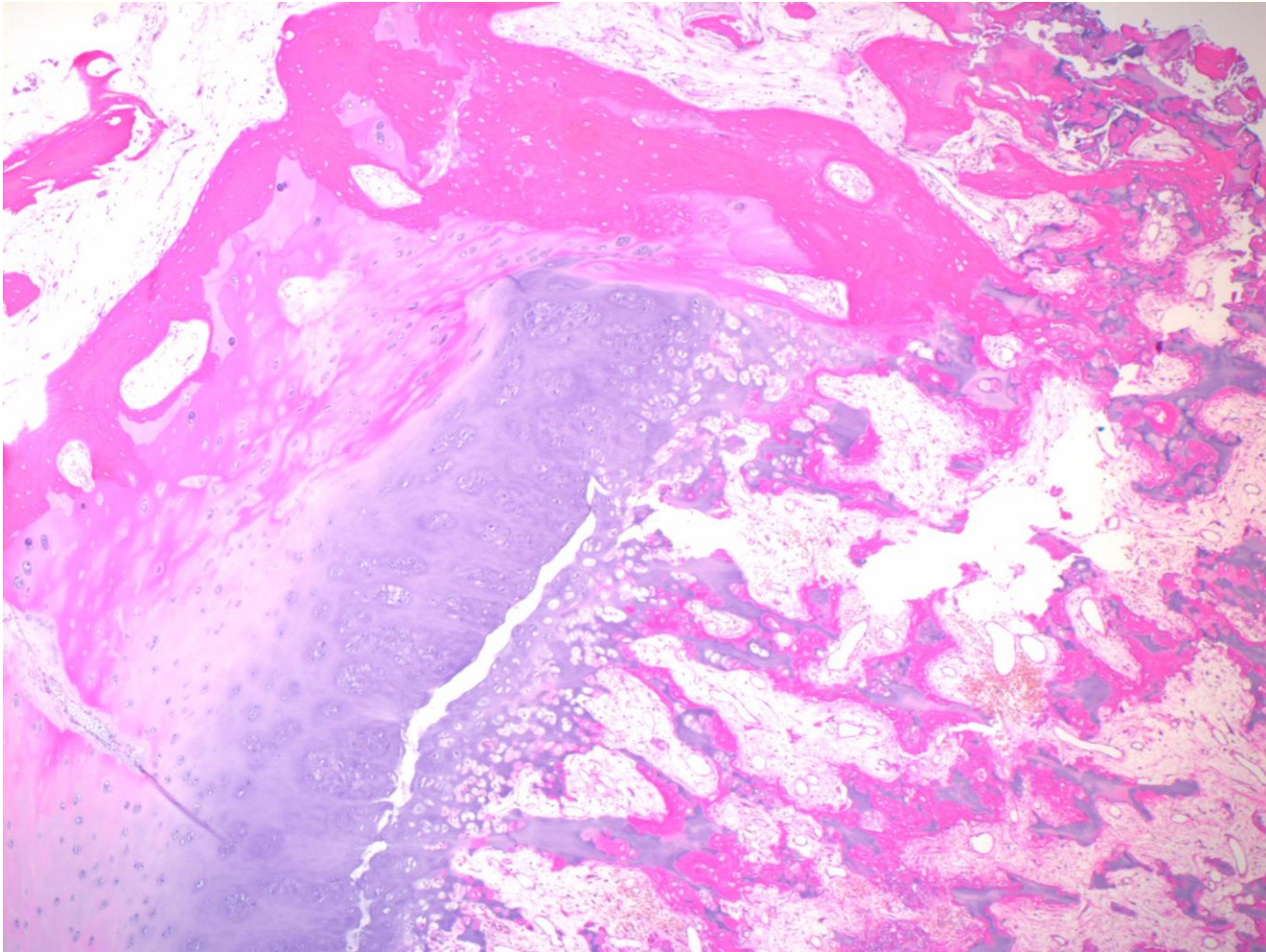
leg; distal tibia; resection-replantation

Surgery: April 10th, 2012



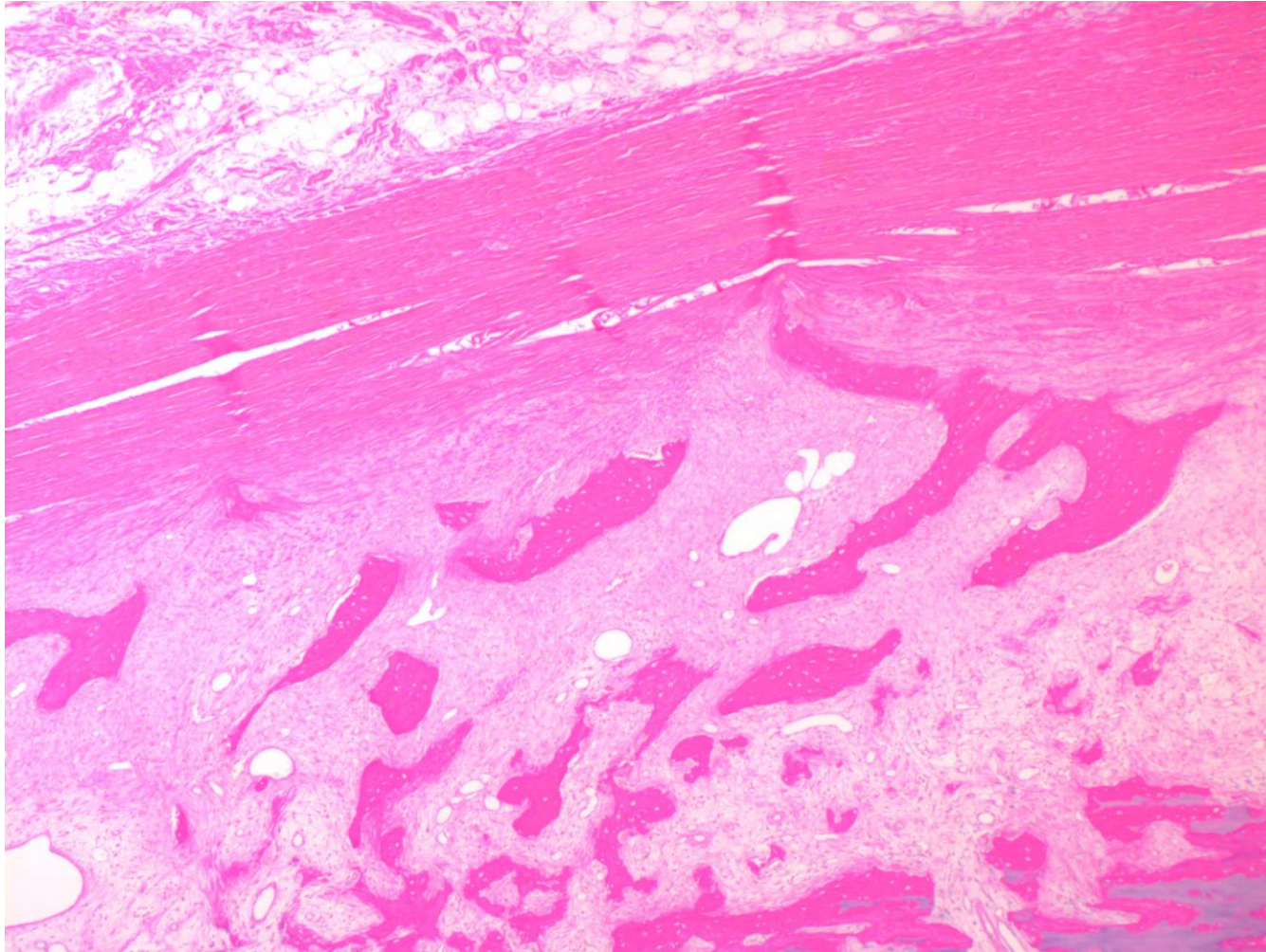
leg; distal tibia; resection-replantation

Surgery: April 10th, 2012



leg; distal tibia; resection-replantation

Surgery: April 10th, 2012



leg; distal tibia; resection-replantation

Result Surgery: April 10th, 2012

Diagnose

B 2012.18323: Teilamputat des distalen Unterschenkels rechts mit einem max. 4,5 cm grossen Osteosarkom, high grade in der Metaphyse der distalen Tibia bei St.n. vorausgegangener Chemotherapie: Ausgedehnte Tumornekrose mit vitalen Tumorresten in ca. 5-10% der untersuchten Tumorschnittfläche (gegen ventro-medial metaphysär) (Regressionsgrad 3 nach Salzer Kuntschik; Responder). Durchbruch durch die Kortikalis ventro-medial mit Infiltration der periossären Weichteile, aber ohne Periostdurchbruch. Minimale Infiltration durch die Epiphysenfuge. Keine Beteiligung der mitresezierten Fibula und der mitresezierten Gelenkfläche. Minimaler Abstand zum proximalen ossären Resektionsrand 2,5 cm. Tumorfremie weite zirkumferentielle Weichteil- und Hautresektionsränder sowie tumorfremie Gefässabsetzungsgränder.

B 2012.18324: Teilamputat des rechten Fusses ohne Tumornachweis.

leg; distal tibia; resection-replantation



leg; distal tibia; resection-replantation Sarcoma- Board: April 19th, 2012

- Discharge hospital next week**
- Chemotherapy after hospital-discharge**
- Follow-up is planned**

leg; distal tibia; resection-replantation

Clinical pictures: June 4, 2012



leg; distal tibia; resection-replantation

X-rays right femur: Nov. 16, 2012



leg; distal tibia; resection-replantation CT right femur: Nov. 19, 2012



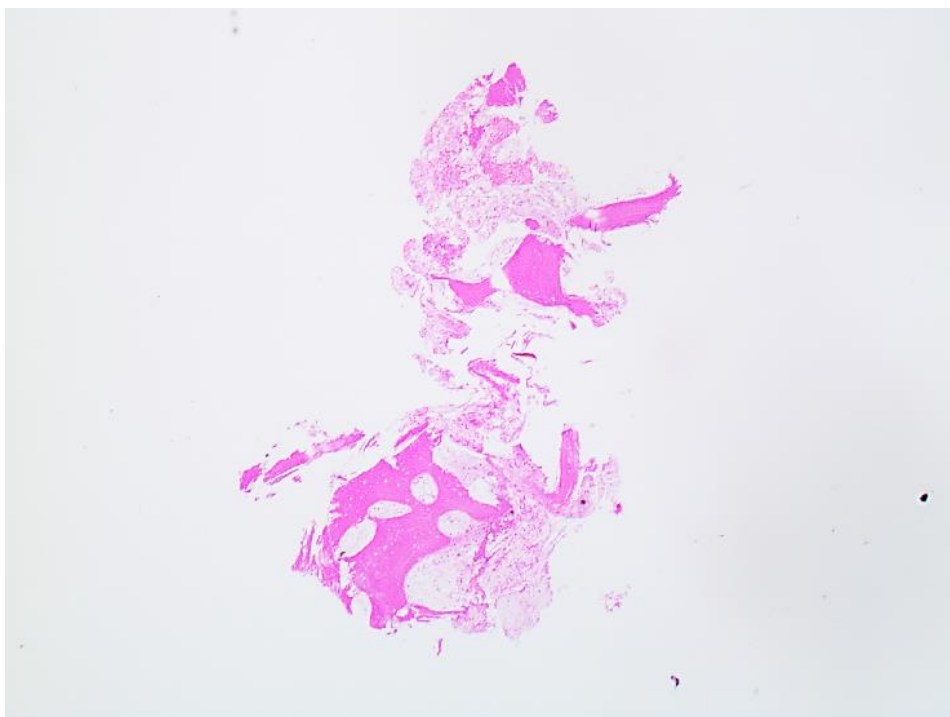
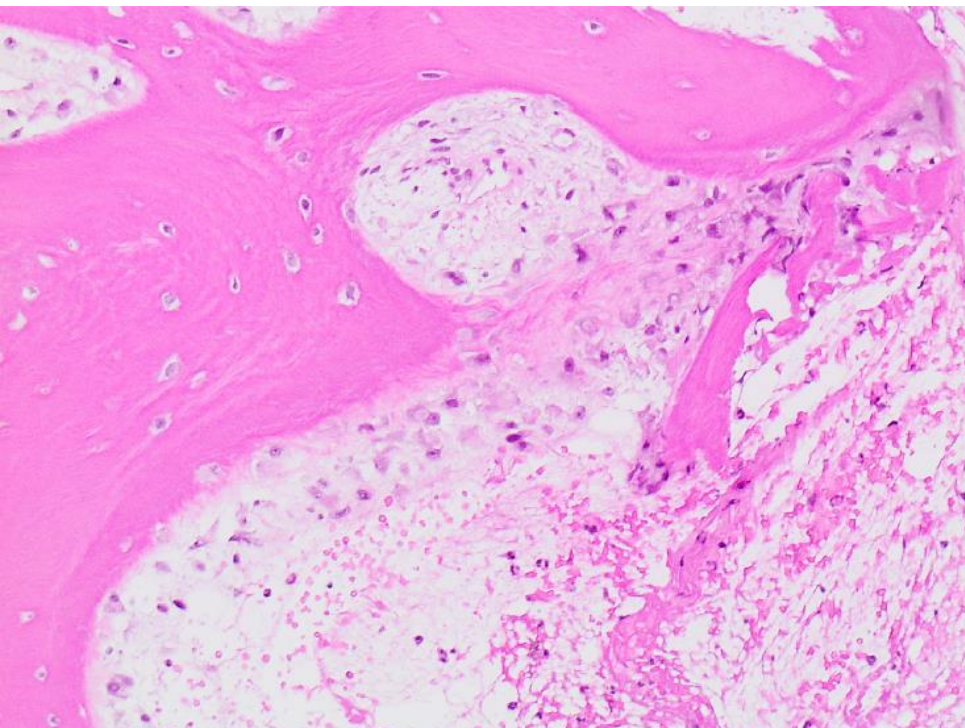
leg; distal tibia; resection-replantation

X-rays right femur: Nov. 20, 2012



leg; distal tibia; resection-replantation

Biopsy: Nov. 19, 2012



leg; distal tibia; resection-replantation Sarcoma- Board: November 22, 2012

- **→ no tumor !**
- **Continuation of the already started conservative treatment of distal femoral fracture**
- **further controls on osteosarcoma of the distal tibia**

leg; distal tibia; resection-replantation

Summer 2017

- **normal, full weight-bearing, no signs of recurrence !**